

SATURN

ATKINS

Dirck Van Vliet

2013 SATURN User Group Meetings – Epsom



Welcome

Thursday 28th November 2013

Ian Wright

Atkins Limited

Plan Design Enable

Working Timetable

Morning session

- 11:00 – **Welcome & Latest News**
- 11:15 – SATVIEW & Future Developments
- 12:00 – Latest changes in SATURN v11.2 & v11.3
- 12:45 – **Lunch**

Afternoon session

- 14:00 – **Presentations**
 - Latest news from the Department
Robin Cambery, Department for Transport
 - Highway Trip Matrix Development: Update
The Denvil Coombe Practice
 - TWID Software Update
Ian Wright, Atkins
- 15.15 – **Coffee**
- 15:30 – Group ('Borough') Statistics
- 15.45 – Future Developments & User Requirements
- 16.15 – **Closing Comments**

SATURN

ATKINS

Dirck Van Vliet

2013 SATURN User Group Meetings - Epsom

Latest News

Thursday 28th November 2013



Plan Design Enable

Release Schedule



Recent SATURN Releases

- Main release March '13
- Beta for new features for external testing & immediate bug fixes
- Rolling release schedule maintained:
 - Generally, one major release per year
 - Rolling releases as required in between

Forthcoming changes ...

Version	Date	Comment
11.1.09	April 2012	Full release
11.1.10	August 2012	XEXES only
11.2.05	March 2013	Full release
11.2.06 to.10	Summer / Autumn 2013	Soft release
11.3.01 <i>Beta</i>	<i>January 2014</i>	<i>Full release</i>
11.3.xx	<i>March 2014</i>	<i>Full release</i>

Post SATURN v11.2.05 release

- Further development work with Network Aggregation (SPIDER)
- Revisions to SATURN Licencing Levels for very large models
- SATWIN 11 Service Pack 1
- Secondary analysis using UFO files
 - New Multi-Core process
- *Beta Development*
 - *'Borough' Group Statistics*
 - Sector-based Matrix Estimation
- SATVIEW Interface
- User Requests
 - *E.g. TfL*



Revised SATURN Levels

- From April 2013, revisions made to accommodate very large models:
 - principally affected 2nd generation of TfL Sub-regional / regional models
 - existing code requires restructuring to accommodate larger sizes
- Key changes:
 - All existing **Level N3 'INTER'** users upgraded to **Level 'N4' for free** but **additional FY13/14 maintenance onwards**
 - New Level **'X7'** for TfL 'LoHAM' regional model

Existing Level	Sub-Version	Existing Zones	Existing Simulated Junctions	Revised Level	Revised Zones	Revised Simulated Junctions
B - >N3	Standard	Up to 2,000	Up to 21,000	No change		
N3	Inter	2,750	Up to 21,000	New N4	4,000	23,000
	Large	5,500				
N3	Bespoke	6,500	Bespoke	New X7	5,750	30,000

SATWIN 11.2 Updates

Restructuring of the Interface

- built around models

For each model:

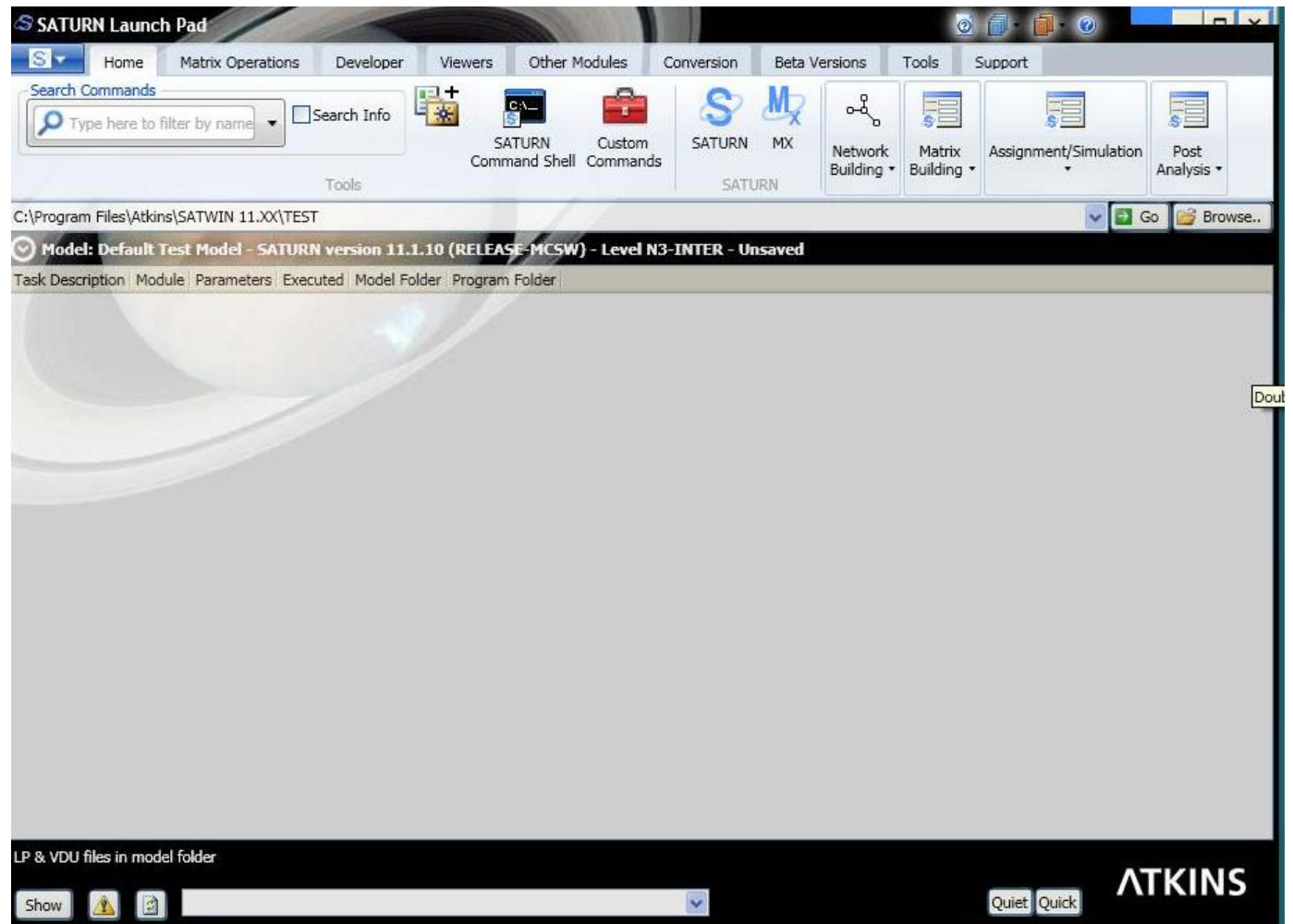
- Working sessions
- Saved settings
- History of operations

WPF-based Interface

- Editable XML configuration file

Availability

- Released with v11.2.05
- Aug'13 Service Pack 1



SATUFO Files

Why aren't we using them more?

- Further enhancements with v11.2.05 release
- Store path (origin-based) information
- Secondary analysis undertaken using UFO files
- Advantages:
 - Paths **extracted** rather than **recreated** from existing link costs (UFC)
 - Secondary analysis only takes a few minutes
 - Same levels of accuracy as the UFC file
 - Now available in SATLOOK, SATCH, SLA, SATPIJA
 - Create during the assignment (SAVUFO=T) or post-assignment (SATUFO)
- Disadvantages:
 - Assignments will take longer (an extra process)

but now available with Multi-Core

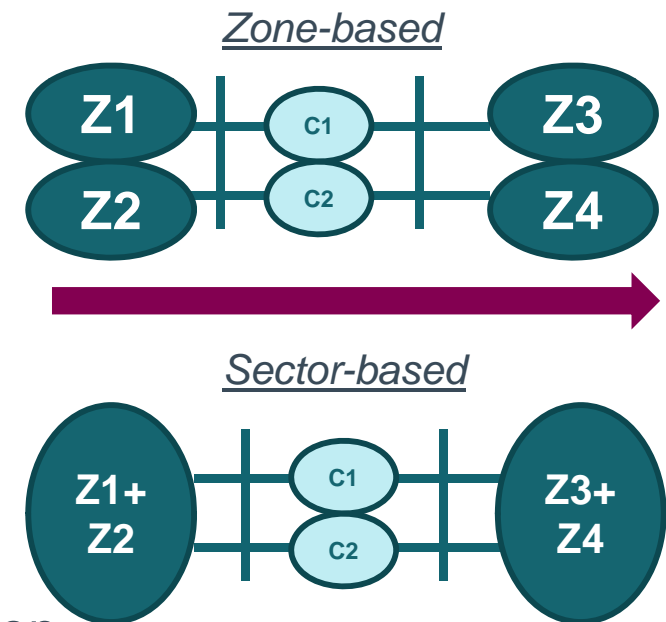


Recommended

Sector-based Matrix Estimation

Expansion of current 'zone-based' ME2

- PIJA factors calculated at the **sector** level rather than **zone** level
 - Applied at a more aggregate level
 - Use at either 'individual link' or 'screenline' (see TAG Unit 3.19)
- Advantages:
 - 'Smoothed' adjustments to the prior matrix
 - Reduction in 'outliers'
- Applications:
 - Updating prior matrices?
 - Reducing the impact of matrix estimation?
- Next Steps:
 - Further testing & explore different levels of aggregation
- Availability:
 - Part of SATURN v11.3.02 Beta



Expanded SATURN Team

Mara Hunt

- 1st Line Support and Administration
 - Initial point of contact
 - Sales, Maintenance, Downloader etc



David Swain

- Technical Development & Programming
 - In Beta*
 - Sector-based Matrix Estimation
 - Borough Statistics
 - To Follow*
 - Phased-based signal timings



Training Courses for 2014

Introduction to SATURN Course

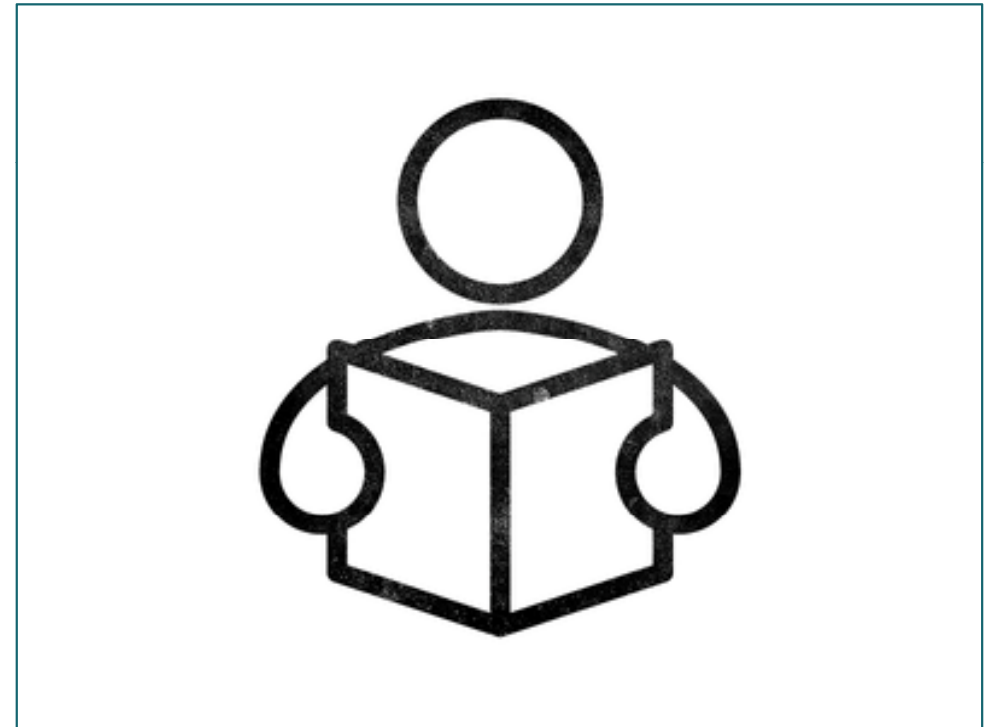
- **Before end of March 2014**
- 3-day course for new and beginner users
- Replace / supplement ITS Course
- *Epsom*

Advanced SATURN Workshop

- **Around May / June 2014**
- 3 x 1-day workshops
- Similar format to 2009 ASW
 - Demand Models, Appraisal, Matrix Estimation etc etc
- *Epsom*

Bespoke courses

- On request



© Richard de Ruijter, Dribbble.com (2013)

Support and Maintenance

Structure of Pricing / Maintenance / Distribution

- Review underway
 - Migration to dongle-based product
- Prices rises for FY14/15 Annual Maintenance

Housekeeping:

- Single support e-mail: saturnsoftware@atkinsglobal.com
- New SATURN support telephone number **01372-756755**
- File exchange server available to exchange model files for support queries

Key Dates:

- April / May13 – FY13/14 Maintenance Invoicing
- November 13 – User Group Meetings
- *ITS Leeds (15th) & Epsom (28th)*
- January 14 – SATURN v11.3.01 Beta release
- March 14 – SATURN v11.3.xx Final release
- April 14 – FY14/15 Maintenance / Support

SATURN

ATKINS

Dirck Van Vliet

2013 SATURN User Group Meetings - Epsom

Morning Sessions

Thursday 28th November 2013



Plan Design Enable

SATURN

ATKINS

Dirck Van Vliet

2013 SATURN User Group Meetings - Epsom

Afternoon Sessions

Thursday 28th November 2013



Plan Design Enable

Working Timetable

Morning session

- 11:00 – **Welcome & Latest News**
- 11:15 – SATVIEW & Future Developments
- 12:00 – Latest changes in SATURN v11.2 & v11.3
- 12:45 – **Lunch**

Afternoon session

- 14:00 – **Presentations**
 - Latest news from the Department
Robin Cambery, Department for Transport
 - Highway Trip Matrix Development: Update
The Denvil Coombe Practice
 - TWID Software Update
Ian Wright, Atkins
- 15.15 – **Coffee**
- 15:30 – Group ('Borough') Statistics
- 15.45 – Future Developments & User Requirements
- 16.15 – **Closing Comments**