

Department for Transport Appraisal Software

Presentation to the 2013 SATURN User Group
Meeting

Thursday 28th November 2013

Ian Wright

Atkins Limited

TWID Software: Overview

- Provision of support, maintenance and development for the DfT's appraisal software
- Undertaken by Atkins on behalf of the Department
- Software applications:
 - TUBA
 - WITA
 - INCA
 - DIADEM



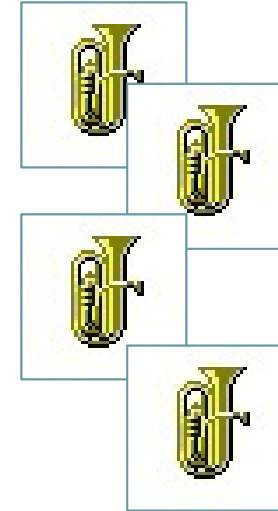
TWID Software: Current Status

Software	TUBA	WITA	INCA	DIADEM
Current Version:	1.9.2	1.1 Beta	4.2	5.0
Date of Last Release:	November 2013	Not formally released	December 2013	February 2011
Recent changes:	See overleaf	64-bit OS compatibility	Withdrawn March 2013	DIADEM 64-bit now available
Future developments:	TUBA 64-bit	Under discussions with DfT	Replaced by MyRIAD Supported by HA	Maintenance only
Contact details:	tuba@atkinsglobal.com inca@atkinsglobal.com	wita@atkinsglobal.com diadem@atkinsglobal.com		

TWID Software: TUBA Updates (i)

Recent TUBA Revisions

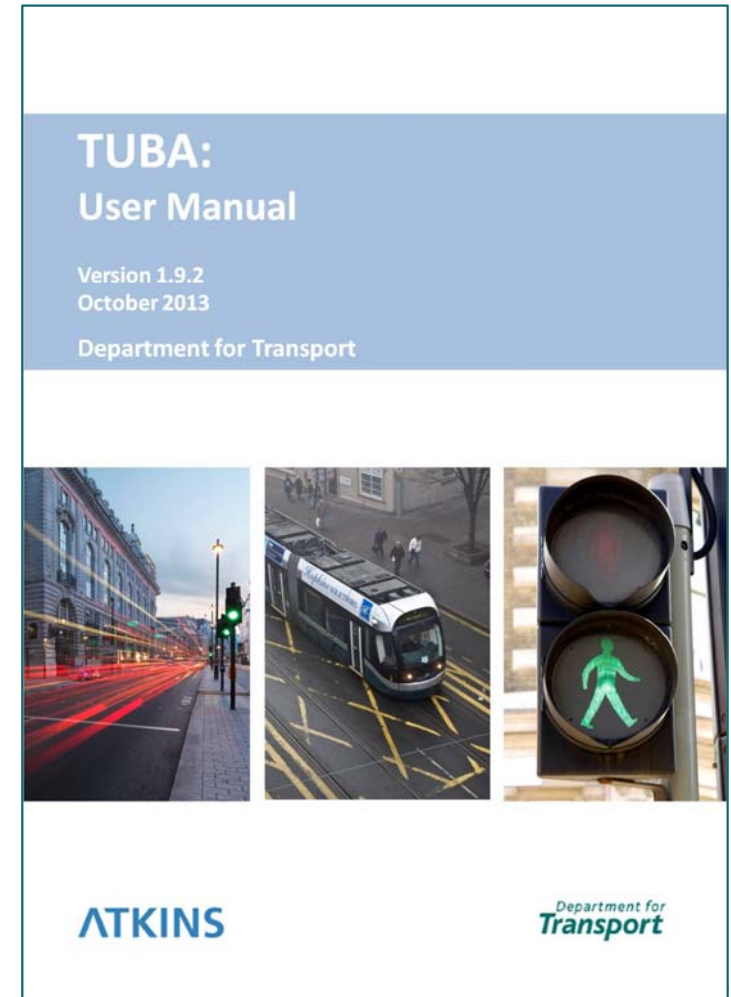
- Version 1.9 Release (September 2012)
 - Move to 2010 base year / prices
 - Update for TAG Unit 3.5.6 and 3.3.5 (August 2012)
 - Addition of electric vehicles (& fuel type)
 - Carbon split into traded and untraded values
- Version 1.9.1 Release (March 2013)
 - Emissions input/output undertaken for CO₂e rather than carbon
 - Minor revisions to the economics parameter file values
 - More robust HTML export routine
 - Additional checks on Fleet proportion and growth input data
 - New Matrix and Memory checks undertaken before running
 - Compatibility with 64-bit Operating Systems



TWID Software: TUBA Updates (ii)

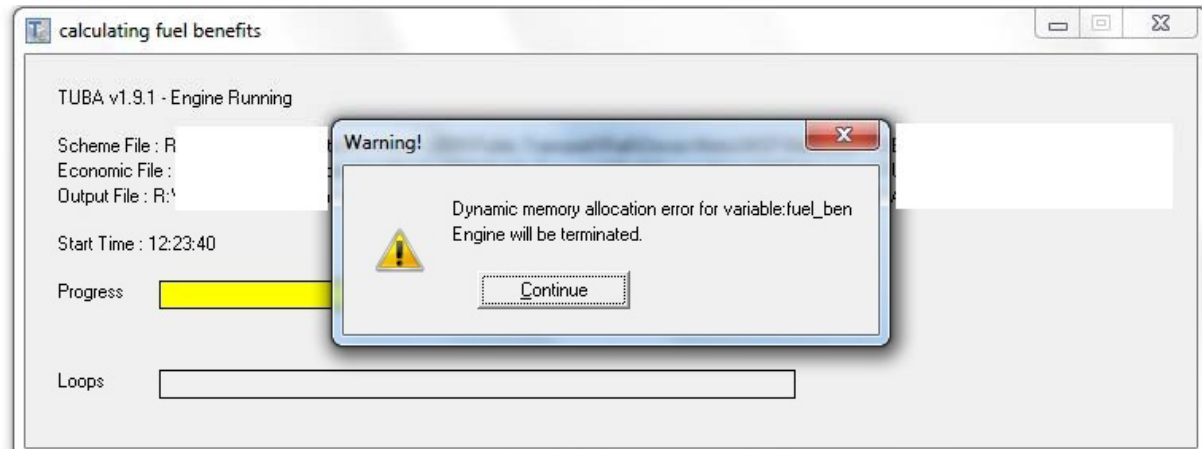
Latest TUBA Revisions

- Version 1.9.2 Release (Nov'13)
 - A large number of (minor) bug fixes (see release notes)
 - Updated economics parameter file
 - Linear rather than exponential growth in the VoT
 - Growth in the monetary values of the CO2e over time
 - Increased # of decimal places
- TAG Unit 3.5.6
 - TUBA v1.9.2 consistent with Oct'12 release
 - New DRAFT version released in Nov
 - A new economics file will be released once adopted by DfT (Jan'14)



TUBA Memory Problems

#1 Support issue



- Uses dynamic memory management to hold ALL data in memory
- No guarantee that sufficient free contiguous memory is available
- Large(-ish) models require >1Gb RAM

A more frequent occurrence:

- TUBA v1.9.x requires more RAM than earlier versions
- Windows XP provides more free contiguous memory than Windows 7
- User Manual Section 3.9 provides more practical advice
 - E.g. One User Class at a time, separate time period

Under development:

- New TUBA 64-bit engine (TUBA_ENG.EXE)
- Funded by TfL