

Department for Transport Appraisal Software

Presentation to the 2014 SATURN User Group
Meeting

Thursday 27th November 2014

Ian Wright

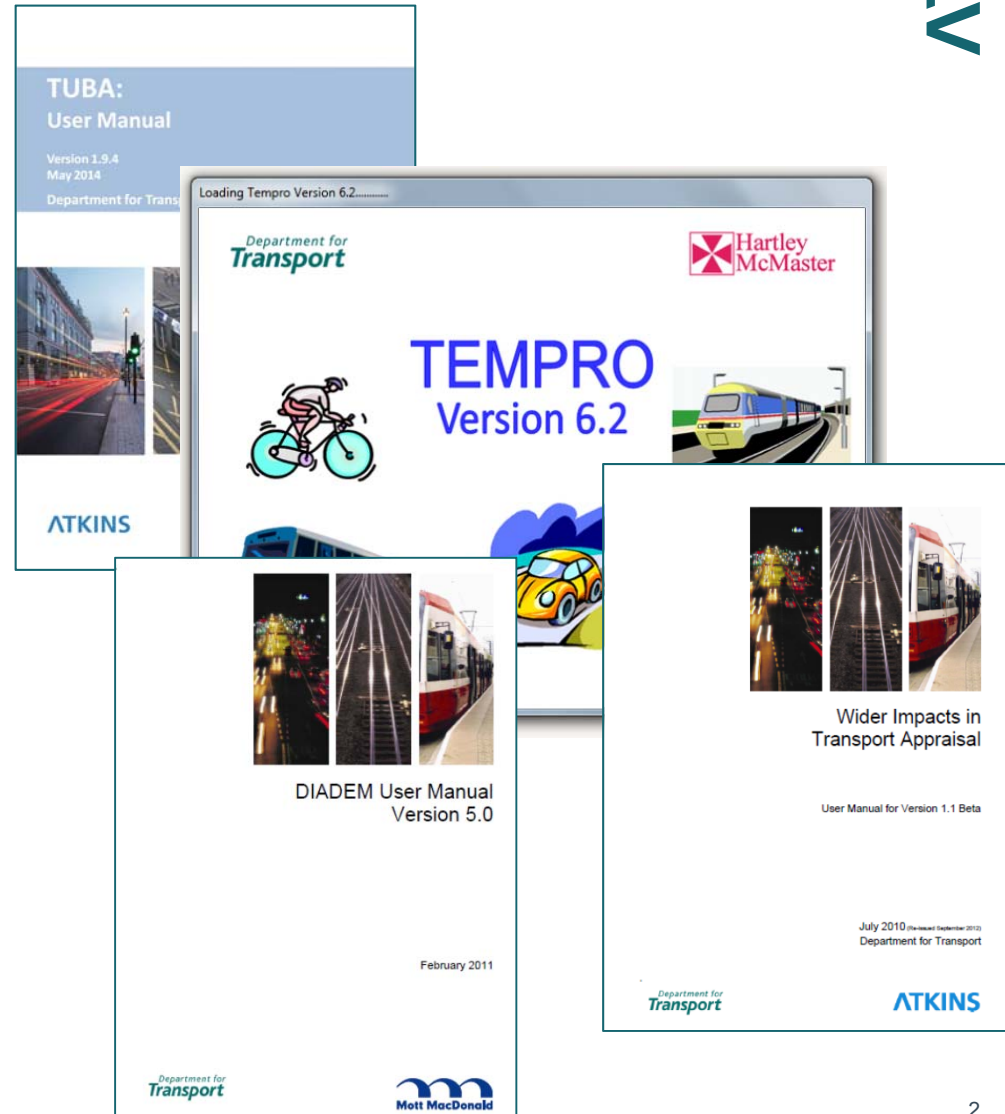
Atkins Limited

Plan Design Enable



TTWD Software: Overview

- Provision of support, maintenance and development for the DfT's appraisal software
- New 3-year contract until June 2017
- Software applications:
 - TUBA
 - **TEMPRO**
 - WITA
 - DIADEM
- Undertaken by Atkins, and **Hartley McMaster Ltd**, on behalf of the Department



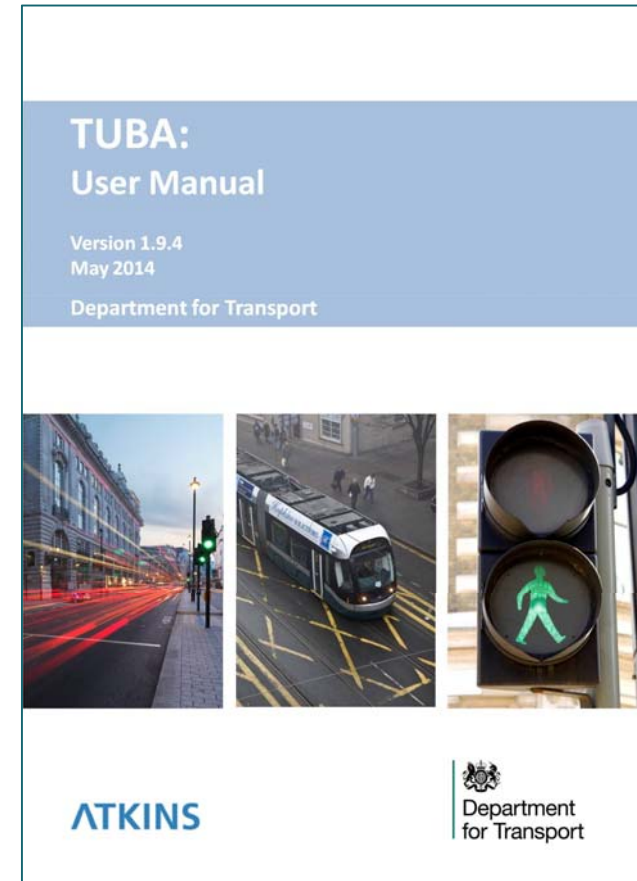
TTWD Software: Current Status

Software	TUBA	TEMPRO	WITA	DIADEM
Current Version:	1.9.4	6.2	1.1 Beta	5.0
Date of Last Release:	Jun' 14	Dec '09 Datasets: Apr'11	Not formally released	Feb' 11
Recent changes:	See overleaf	None	64-bit OS compatibility (Sep'13)	New DIADEM 64-bit (Mar'13)
Future developments:	TUBA V1.9.5	NTEM dataset update	Under discussions with DfT	Maintenance only
Contact details:	tuba@atkinsglobal.com tempo@atkinsglobal.com wita@atkinsglobal.com diadem@atkinsglobal.com			

TTWD Software: TUBA Updates (ii)

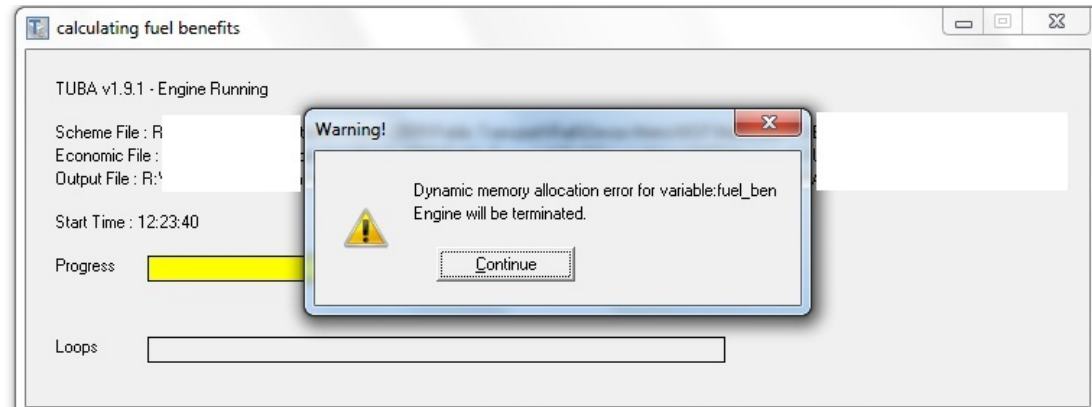
Latest TUBA Revisions

- Version 1.9.3 Release (Jan'14)
 - Revised VOT growth rate & applied discount rate
 - Minor bug fixes
 - Updated economics parameter file
- Version 1.9.4 Release (Jun'14)
 - GDP-based price deflator
 - Minor bug fixes
 - Updated economics parameter file
 - Separate 32-bit & 64-bit applications
 - Available to **all** users



TUBA Memory Problems solved!!!

#1 Support issue



- Uses dynamic memory management to hold ALL data in memory
- No guarantee that sufficient free contiguous memory is available
- Large(-ish) models require >1Gb RAM

With TUBA v1.9.4 Release

- Separate 32-bit and 64-bit versions
- Maximum memory accessible = 192Gb (subject to PC hardware)
- Practical tests have reached ~100Gb
 - ELHAM = 2500 zones, 10 user classes, 3 time periods, 2 forecast years
- Now available to **all** users

TTWD Software: TUBA Updates (iii)

Next TUBA Release

- Version 1.9.5
 - Updated economics parameter file consistent with Autumn '14 WebTAG Databook including:
 - Vehicle operating costs
 - Carbon emission rates and values
 - Minor bug fixes
 - Overzealous checks on Zone -> Sector file
 - Fatal error for non-sequential user class names
 - Tidy-up of TUBA_G exporting of user-edits
 - Released earlier this week

