

# SATURN

## 2017 User Group Meetings

Leeds

Thursday 16<sup>th</sup> November 2017

20 November 2017

**ATKINS**  
Member of the SNC-Lavalin Group  
**Dirck Van Vliet**  
  
**UNIVERSITY OF LEEDS**



1

## Programme

### Morning Session

- 11.00 - SATURN News
- 11.30 - Presentations
  - SatGPU – Rapid Assignments using GPU-based hardware  
*Atkins & University of Sheffield*
  - Latest SATURN v11.4 & v11.5 Releases  
*Dr Dirck Van Vliet*
- 12.45 - Lunch

20 November 2017


**ATKINS**  
Member of the SNC-Lavalin Group

### Afternoon Session

- 14.00 - Presentations
  - Modelling Ultra Low Emission Zones with SATURN , *TfL*
  - What a Noise! Assignments, Variability & Fixed Cost Flow 101, *Atkins*
- 15.15 – Coffee Break
- 15.35 – Presentations
  - TUBA, TEMPro, WITA & DIADEM Update, *Atkins*
- 16:00 – User Requests
- 16.15 – Close




2



# Software Releases

20 November 2017

3



## Release Schedule

### Recent SATURN Core Releases


Continuation of 11.3.xx series  
Current release v11.3.12W

- Standard for HERTMs & HAMs
- Floating Point Errors
- Resolves issues when skimming UFO files for  $T_{ij} = 0$

Next (overdue) release = v11.4

- Likely to be either v11.4.05R or S
- Updates to simulation
- Improved convergence
- Resolves UFC hanging

Version	Date	Release
11.3.12U	Nov'15	XEXES + Installer
11.3.12V	Apr'16 onwards	Hot fixes for specific users
11.3.12W	May'17	Full Installer
	Followed by	Hot fixes for specific users
11.4.05R or 11.4.05S	Nov'17 (target)	Full Installer



20 November 2017

4

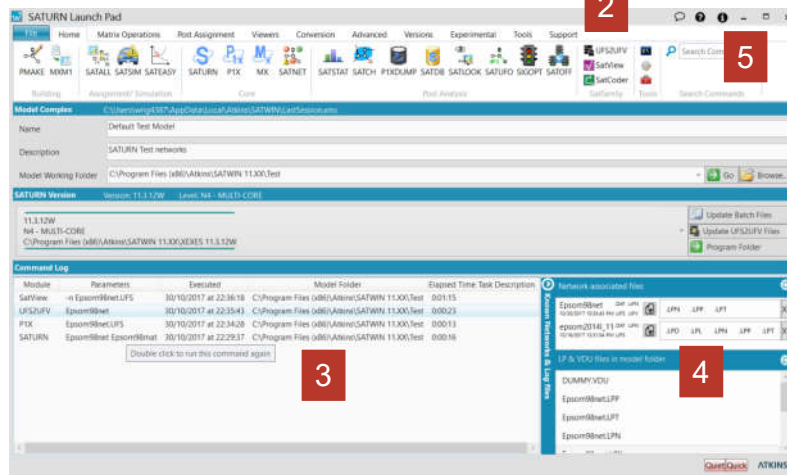
# Welcome to SatWin v11.4

**ATKINS**  
Member of the SNC Lavalin Group

## A spring clean

Improvements include:

1. General refresh
2. Links to SatView, UFS2UFV & SatCoder
3. Expanded Command Panel
4. Short-cut to recent output files
5. Improved links to SATURN support & website



20 November 2017

To update footer go to 'Insert' Tab > Header & Footer



5

# SATview Update

**ATKINS**  
Member of the SNC Lavalin Group

## Current Release v1.18

Published in July 2017

- Trace bendy updates
- Selections / Zooms
- Minor bug fixes

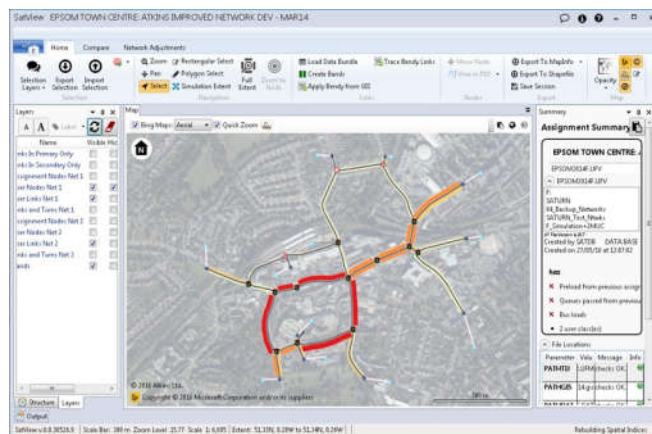
Top Tips:

1. Use existing DA codes for SLA reporting
2. Re-use session logs for repeating processes

See Webinars for more information

As part of v11.4, revised UFS2UFV gives:

1. Additional 11.4 Data Fields
2. Data Fields for SLAs and User Calculated by SATDB



20 November 2017

To update footer go to 'Insert' Tab > Header & Footer



6

# SATCODER Update

**ATKINS**  
Member of the SNC Lavalin Group

## Current Release v1.3

Published in October 2016

## Latest Beta is SatCoder v1.5

- Release Candidate May'17
- Mitigates issue of memory leakage on certain projects
- Available on request under FY17/18 SATURNnext Programme

Often used within Atkins as a Network Coding Review tool



# Other Software Developments

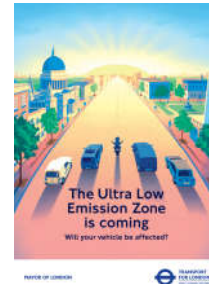
**ATKINS**  
Member of the SNC Lavalin Group

# Recent Development Collaborations **ATKINS**

Member of the SNC Lavalin Group

## Area Tolling

- Developed in collaboration with TfL for ULEZ
- New multi-cordon based equilibrium assignment method
- Works with independent and/or additive cordon charging systems



## SATGPU

- Collaborative R&D Project using GPU-based hardware
- Proven during Phase 1, Optimised with Phase 2
- Substantially faster than SATURN Multi-Core



© FutureMark (2017)

See following Presentations

20 November 2017

9

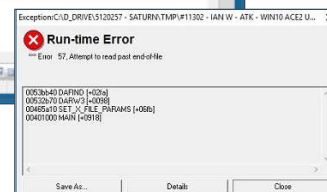
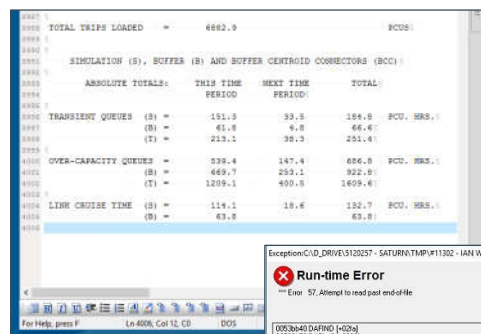
# UFC Hanging ... finally solved!!!

**ATKINS**  
Member of the SNC Lavalin Group

## Technically challenging

Symptoms:

- Whilst SATALL appears to finish ...
  - Truncated LPT file
  - Corrupted UFS / UFC
- Appears to be a random event
- Increased probability if:
  - More recent Windows 10
  - More recent Intel processors
  - Greater frequency with Atkins hardware (?)
- Resolved with migration to 2017 Salford / IVF compilers
- Adopted for SATURN v11.4 onwards



20 November 2017

10

**ATKINS**  
Member of the SNC-Lavalin Group

# Technical Support

20 November 2017 11

**ATKINS**  
Member of the SNC-Lavalin Group

## OMX - Open Matrix Data Format (i)

### Have we overlooked this?

**What is OMX?**

- Open Matrix Data Format standard using HDF5 compression standard
- Originated in the US ([www.sites.google.com/site/openmodeldata/](http://www.sites.google.com/site/openmodeldata/))
- Loose-linkages to existing transport packages (e.g. EMME, TransCAD, VISUM)
- **Already available in CUBE v6.4.2 & SATURN v11.3.12W onwards**

**Why use OMX rather than CSV?**

- Smaller file sizes & faster read/write
- CUBE / SATURN revision handles stacked matrices
- Increased data precision (i.e. not fixed dp!)

**Applications:**

- TfL New Demand Model
- Available with WITA v2.0 ???

Matrix ↔ Data

Cube

20 November 2017 12

To update footer go to 'Insert' Tab > Header & Footer

# OMX - Open Matrix Data Format (ii)

## An example using ELHAM

Stats: 2,358 zones, 4 Time Periods, 5 User Classes, 2 Forecast Years, 2 Scenarios

Measure		TUBA Format 2	CSV	OMX	UFM
# of Files		400	400	80	80
Time Taken (mins)	Export	59	28	6	
	Import	517	9	2	
	<b>Total</b>	<b>576</b>	<b>36</b>	<b>8</b>	
<b>Time Ratio</b>		<b>71.1</b>	<b>4.5</b>	<b>1.0</b>	
Total Size (Gb)		50.0	16.4	5.1	6.4
<b>Size Ratio</b>		<b>9.9</b>	<b>3.2</b>	<b>1.0</b>	

20 November 2017

To update footer go to 'Insert' Tab > Header & Footer



13

# SATUFO Files (Another reminder!)

## We should be using them by default ...

Store path (origin-based) information

Secondary analysis undertaken using UFO files

### Advantages:

- Paths **extracted** rather than **recreated** from existing link costs (UFC)
- Secondary analysis only takes a few minutes
- Same levels of accuracy as the UFC file
- Available in SATLOOK, SATCH, SLAs & SATPIJA
- Create during the assignment (SAVUFO=T) or post-assignment (SATUFO)
  - but for larger models, recommend calling SATUFO separately

### Disadvantages:

- Assignments will take longer (an extra process)  
*but available with Multi-Core (& SatGPU soon!)*



© www.waterdesalinationplants.com (2013)

**HIGHLY  
Recommended**

20 November 2017



14

# SATURNnext Programme

## Early Access for Users

As a SATURNnext member:

- early hands on experience of potential new features
- chance to influence development
- working more closely with SATURN development team
- potential resolution of in-house IT “problems” before Release

Reduced scale in FY17/18

Tasks undertaken in last 12 months include:

- SatView and SatCoder Release Testing
- SATURN v11.5 Area Tolling

ATKINS  
Member of the SNC Lavalin Group



20 November 2017

15

# Admin & Training

ATKINS  
Member of the SNC Lavalin Group

20 November 2017

16



# Training Material & Courses

**ATKINS**  
Member of the SNC Lavalin Group

## Webinars

- SatView: Full set of "How to .." series created in Apr'17
- SatCoder: Basic introduction produced

## Introduction to SATURN Course

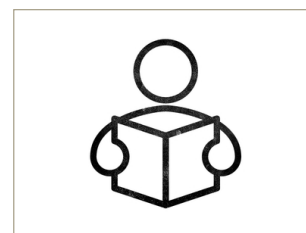
3-day course for new and beginner users

Forthcoming dates:

- 6<sup>th</sup> – 8<sup>th</sup> February 2018
- September 2018

Further details on the SATURN Website

- [www.saturnsoftware.co.uk](http://www.saturnsoftware.co.uk) -> Events



© Richard de Ruijter, Dribbble.com (2013)

20 November 2017



17

# Administrative Details

**ATKINS**  
Member of the SNC Lavalin Group

## Housekeeping

E-mails:

- **Support e-mail:** [saturnsoftware@atkinglobal.com](mailto:saturnsoftware@atkinglobal.com)
- **Next programme:** [saturnnext@atkinglobal.com](mailto:saturnnext@atkinglobal.com)
- **Mailing List:** [saturnmail@atkinglobal.com](mailto:saturnmail@atkinglobal.com)

SATURN support telephone number **01372-756755**

FTP site available to exchange model files for support queries

### Key Dates

Christmas Break: Closing Thu 21<sup>st</sup> Dec, Re-opening Wed 3<sup>rd</sup> Jan

November 2017:            User Group Meetings  
                                  - Epsom (3<sup>rd</sup> Nov) & Leeds (16<sup>th</sup> Nov)  
                                  v11.4 Release

January 2018:            SatGPU Release

February 2018:         Introduction to SATURN Course



20 November 2017



18

# Programme

**Morning Session**

11.00 - SATURN News

11.25 - Presentations

- SatGPU – Rapid Assignments using GPU-based hardware  
*Atkins & University of Sheffield*
- Latest SATURN v11.4 & v11.5 Releases  
*Dr Dirck Van Vliet*

12.45 - Lunch

**Afternoon Session**

14.00 - Presentations

- Modelling Ultra Low Emission Zones with SATURN , *TfL*
- What a Noise! Assignments, Variability & Fixed Cost Flow 101, *Atkins*

15.15 – Coffee Break



15.35 – Presentations

- TUBA, TEMPro, WITA & DIADEM Update, *Atkins*

16:00 – User Requests

16.15 – Close

20 November 2017



19

# SATURN

## 2017 SATURN User Group Meeting - Morning Presentations

20 November 2017



20