

# DfT TTWD User Support – Latest News

## 2018 User Group Meeting

November 2018

*Final 03/12/18 - UGM2018 TTWD Software Update*



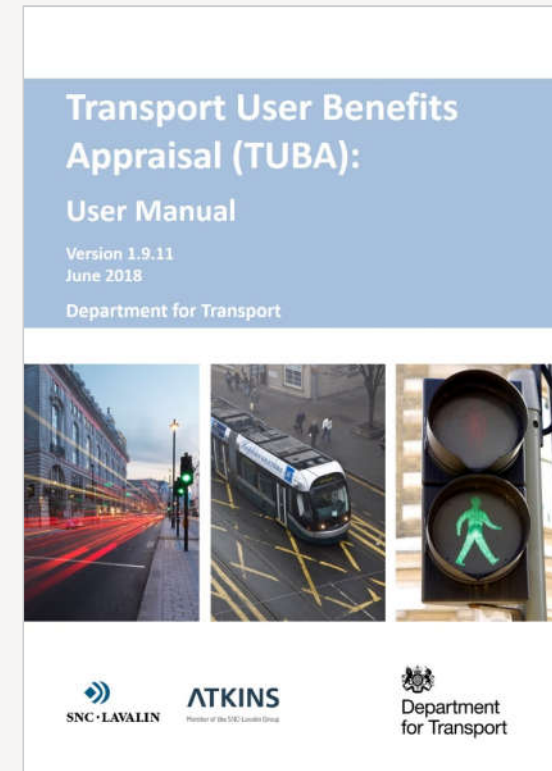
# Update on TUBA

## Current TUBA v1.9.11 Release (Jun'18)

- › Based on WebTAG Data Book v1.10 (May'18)
  - › Updated Economics Parameter File focussing on
    - › *Fuel / carbon valuations*
    - › *Fuel consumption & emission rates*
    - › *Fleet composition*
- › No significant revisions to calculations

## Forthcoming TUBA v1.9.12 Release (Dec'18)

- › Based on WebTAG Data Book v1.11 (Nov'18)
  - › Updated Economics Parameter File
    - › *Align with Oct'18 budget / OBR forecasts*
    - › *Details to follow*
- › No significant revisions to calculations



# Update on TEMPro / NTEM

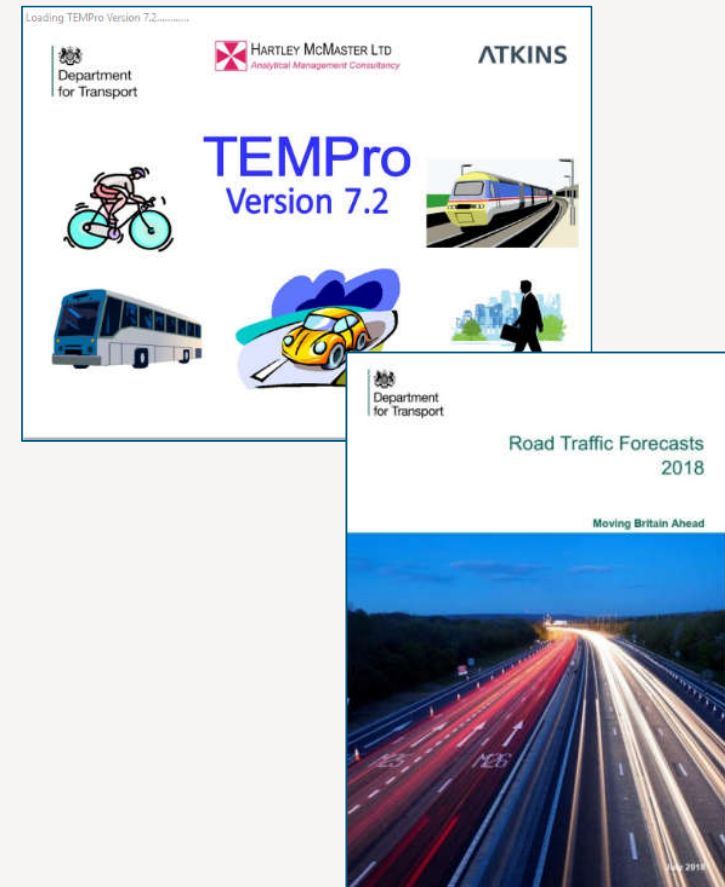
## Current TEMPro / NTEM v7.2 (Mar'17)

- › Provides access to National Trip End Model Forecasts
  - › No updates scheduled
- › Road Traffic Forecasts 2015 (RTF15) embedded within
  - › Used when no traffic model available to apply capacity-constraints, based on NTM forecasts
  - › Uses NTEM v6.2 trip end growth projections
    - › *Recognised that may lead to inconsistencies*

## NTM 2018 Forecasts published in Sep'18

## Discussions regarding TEMPro v7.3 update

- › Provide access to new RTF18 dataset
  - › Number of scenarios to be determined
- › No changes to NTEM dataset
- › Further details, when available, via TEMPro Mailing List



<https://www.gov.uk/government/publications/road-traffic-forecasts-2018>

# Update on WITA (i)

## New WITA v2.0 Beta release in early Dec'18

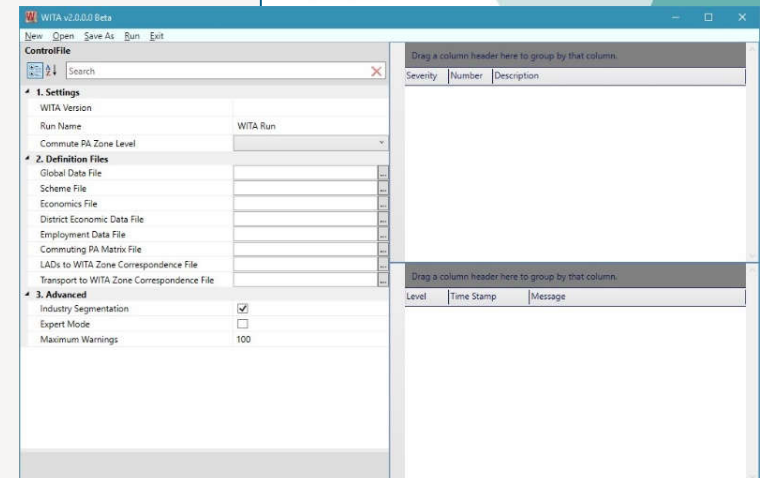
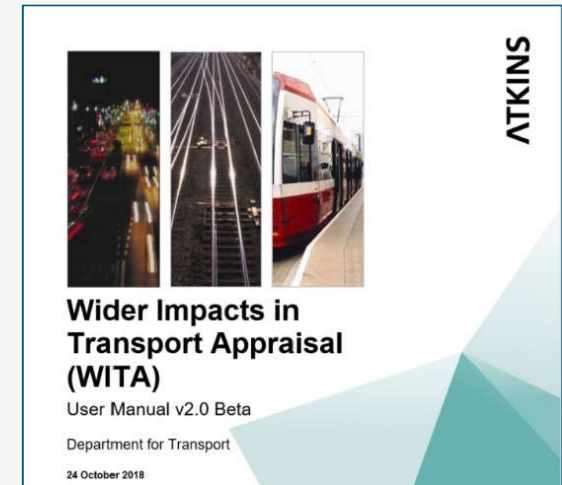
- › Implements TAG Unit A2.1 Wider Economic Impacts Appraisal (May'18)
- › Full re-write with both 32 & 64-bit applications available
  - › Resolves previous memory problems
  - › Expert mode provides access to internal calculations
  - › New documentation
  - › Shared input files with TUBA v1.9.11 release

## New 2018 Wider Impacts Dataset released in parallel

- › 2011 census based (as per NTEM v7.x)

## Provided in Beta form until May'19

- › Free licence and support
- › Requirement for parallel spreadsheet calculation removed
- › Full commercial release in May 2019



# Update on WITA (ii)

## Advice to existing Business Case Users

- › For those in early stage or soon to start
  - › Switch to WITA v2.0 Beta
- › For those due to submit and/or publish
  - › Scheme promoters to discuss with DfT
- › Any queries – contact DfT ([tasm@dft.gov.uk](mailto:tasm@dft.gov.uk))

## Release process:

- › Announcement from TTWD Mailing List
  - › Users to request access
  - › Software provided by downloader account

## Future Support / Licence costs

- › In discussions - expectation that:
  - › Existing site-licence structure to be retained
  - › Revisions to pricing
  - › Changes in May 2019

## OMX Integration

- › Will be incorporated by May 2019

# Update on DIADEM

## Currently two versions:

- › DIADEM v5.0 (Feb 2011)
  - › Available to all users
- › DIADEM v6.3.4 (Oct 2017)
  - › Highways England RTM users only
  - › Key changes:
    - › (i) *Faster skimming*
    - › (ii) *OD-based occupancy*
    - › (iii) *Peak Period to Hour factors*
    - › (iv) *Sub-Area GAP convergence*
    - › (v) *User-defined convergence parameters for doubly-constrained furnishing*

## Work underway for DIADEM v7.0

- › Minor revisions to DIADEM v6.3.4
  - › Available to all supported users
- › Expected in spring 2019

